

## TECHNICAL INFORMATION



# Exodus® Multi-Dose Paste

(pyrantel pamoate)

ANADA 200-350, Approved by FDA

### EQUINE ANTHELMINTIC

FOR ORAL USE IN HORSES ONLY

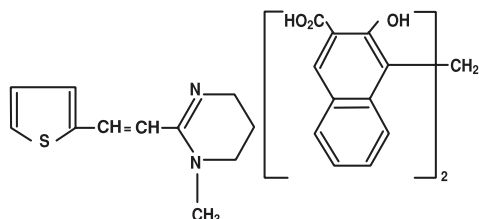
**Exodus® Multi-Dose Paste** (pyrantel pamoate) is a pale yellow to buff paste containing 43.9% w/w pyrantel pamoate in an inert vehicle. Each syringe contains 7.2 grams pyrantel base in 47.2 grams paste. Each milliliter contains 171 milligrams pyrantel base as pyrantel pamoate.

READ ENTIRE DIRECTIONS CAREFULLY BEFORE USING THIS PRODUCT

### COMPOSITION:

Pyrantel pamoate is a compound belonging to a family classified chemically as tetrahydropyrimidines. It is a yellow, water-insoluble crystalline salt of the tetrahydropyrimidine base and pamoic acid containing 34.7% base activity.

The chemical structure and name are given below:



Chemical Name: (E)-1,4,5,6-tetrahydro-1-methyl-2-[2-(2-thienyl)-vinyl]-pyrimidine 4,4'-methylenebis [3-hydroxy-2 naphtholate] (1:1)

### INDICATIONS:

For the removal and control of mature infections of large strongyles (*Strongylus vulgaris*, *S. edentatus*, *S. equinus*); small strongyles; pinworms (*Oxyuris equi*); and large roundworms (*Parascaris equorum*) in horses and ponies. Consult your veterinarian for assistance in the diagnosis, treatment, and control of parasitism.

### DOSAGE AND TREATMENT:

**Exodus® Multi-Dose Paste** (pyrantel pamoate) is to be administered as a single oral dose of 3 milligrams pyrantel base per pound of body weight. The syringe has four weight mark increments. Each weight mark indicates the recommended dose for 300 pounds of body weight. One-half syringe treats a 1200 lb horse.

| DOSAGE            |             |                  |
|-------------------|-------------|------------------|
| Body Weight Range | Quantity    | mg Pyrantel Base |
| up to 300 lb      | 1/8 syringe | 900 mg           |
| 301 to 600 lb     | 1/4 syringe | 1800 mg          |
| 601 to 900 lb     | 3/8 syringe | 2700 mg          |
| 901 to 1200 lb    | 1/2 syringe | 3600 mg          |

**NOTE:** Position ring-gauge over appropriate mark on plunger.

For maximum control of parasitism, it is recommended that foals (2-8 months of age) be dosed every 4 weeks. To minimize the potential source of infection that the mare may pose to the foal, the mare should be treated 1 month prior to anticipated foaling date followed by re-treatment 10 days to 2 weeks after birth of foal. Horses and ponies over 8 months of age should be routinely dosed every 6 weeks.

It is recommended that severely debilitated animals not be treated with this preparation.

### ADMINISTRATION:

After removing the cap, the paste should be deposited on the dorsum of the tongue. Introduce the nozzle end of the syringe at the corner of the mouth. Direct the syringe backwards and depress the plunger to deposit the paste onto the tongue. Given in this manner, it is unlikely that rejection of the paste will occur. Raising the horse's head sometimes assists in the swallowing process. When only part of the paste has been used, replace the cap on the syringe nozzle.

### EFFICACY:

Critical (worm count) studies in horses demonstrated that pyrantel pamoate administered at the recommended dosage was efficacious against mature infections of *Strongylus vulgaris* (>90%), *S. edentatus* (69%), *S. equinus* (>90%), *Oxyuris equi* (81%), *Parascaris equorum* (>90%), and small strongyles (>90%).

### RESIDUE WARNING:

Not intended for use in horses intended for human consumption.

**FOR ORAL USE IN HORSES ONLY.**  
**KEEP OUT OF REACH OF CHILDREN.**

### RECOMMENDED STORAGE:

Store at controlled room temperature 15°-30°C (59°-86°F).

**Manufactured by:**  
Bimeda-MTC Animal Health Inc  
420 Beavertdale Road  
Cambridge, ON N3C 2W4

**Distributed by:**  
Bimeda, Inc.  
Le Sueur, MN 56058  
www.bimeda.com

